

Installing Mechanics:

Pass instruction manual onto customer. This contains vital information about the use, adjustments, and maintenance of the product. It also contains important cautionary and warning information.

Please report any missing parts to your dealer or directly to National Cycle. The following information is necessary. BAG NUMBER located on the outside of plastic bag and PLACE OF PURCHASE.

PARTS LIST

KIT CTM CONTAINS:

<u>Index</u>	<u>Part No.</u>	<u>Description</u>	<u>Qty.</u>
Bag No. 111			
1	37-410507-000	Bracket, Flat	2
2	55-586040-000	Carriage Bolt	8
3	42-482200-000	Nut, Cap	8
Bag No. 821			
4	37-400910-000	Clamp	4
5	75-764002-000	Clamp Spacer	4

Tools Required:

1/2" Open End Wrench

Tools to adjust window of Heavy Duty Windshield if necessary:

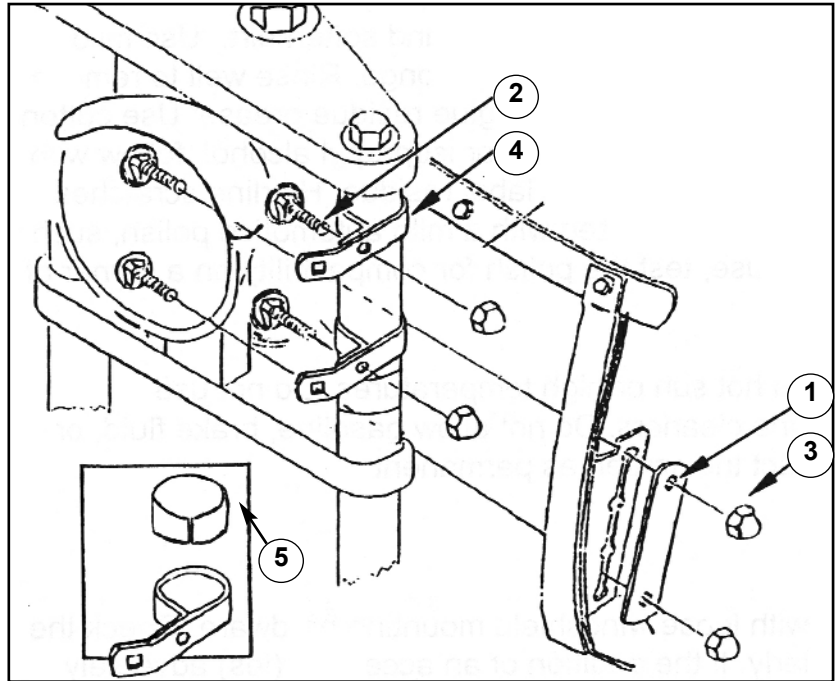
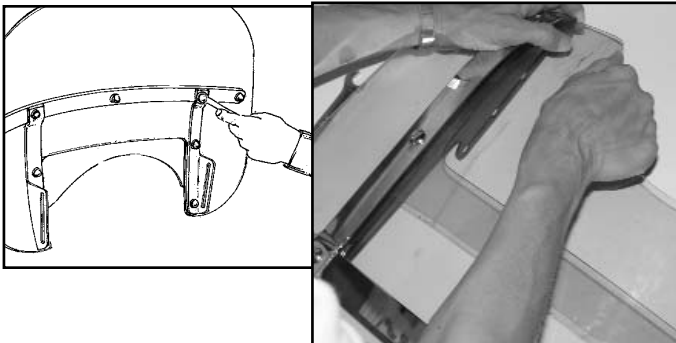
Torque Wrench,
Screwdriver, Phillips

PREPARATION

Place the motorcycle securely on its stand. Cover the fender and fuel tank to avoid scratches.

ADJUSTING WINDOW

The window is easily adjusted. Loosen the 6 cap nuts on the vertical chrome strips. Replace or adjust window. Tighten cap nuts to 2-4 ft.lbs (2.7-5.4 Nm), torque pressure. Use a Torque Wrench, DO NOT OVER TIGHTEN.



INSTALLATION PROCEDURE

1. Slightly ease open a fork bracket just enough to slip it onto the fork.
2. Apply one strip of rubber gasket to inside of fork clamp. Repeat for other 3 clamps.
3. Slip for k clamps onto fork tubes with long side of clamp facing outward and forward as illustrated in diagram.

POSITION CLAMPS

1. Hand tighten Clamps into position. Top clamps will be approximately 2 mm (1/16") from top of fork and lower clamps 8mm (1/4") above turn signal bracket.
2. Insert carriage bolts through holes from inside of fork and hand tighten with cap nuts. Repeat procedure for other side.

POSITION WINDSHIELD

1. Hold windshield in place so that top of headlight opening is approximately 10mm (1/2") form headlight. Adjust the chrome fork clamps to correct location using flat bracket and windshield as reference. Install windshield onto brackets using flat plate, remaining carriage bolts, and cap nuts.

Note: At this time check height of windshield. The higher you raise the windshield, the lower you will adjust the window. Refer to "Adjusting Window".

2. Make final adjustments. Check symmetry of left and right sides. Fully tighten all 8 carriage bolts, and cap nuts.

Warning / Maintenance

National cycle windshields and fairings are designed to provide wind protection and increased riding comfort, but not protection in the event of a collision with another vehicle, the road, birds, or any other object.

Our products utilize certain features, patented and otherwise, that may minimize injury in certain accidents, but the possibility of injury exists if the screen is broken or if impacted by an object.

Always wear eye protection, helmets and protective clothing. Never ride your motorcycle while under the influence of drugs or alcohol.

All of our products are made in conformance and exceed the requirements of ABE, DOT, SS205,Z26.1, classifications AS6 and AS7, which covers all safety glazing for motorcycle application.

Never ride your motorcycle with loose windshield mounting hardware. Check the hardware for tightness regularly.

Today's motorcycles are built with enough frame rigidity to withstand the moderate loads imposed on them by the foreseeable addition of a fork mounted windshield.

If the addition of an accessory(ies) adversely affects your motorcycle's stability, immediately remove the accessory(ies). Do not ride a motorcycle that exhibits unsafe handling traits. Have experienced service personnel correct any problem before riding with the accessory(ies) installed. For further questions concerning handling problems associated with an accessory(ies), contact your dealer, motorcycle manufacturer, or accessory manufacturer.

MAINTENANCE

To clean the screen, wash with a clean soft cloth, plenty of warm water and, if necessary, a non-abrasive soap such as dishwashing liquid. Flannel or soft chamois make good cleaning cloths. Paint, glue residue or grease removal: Moisten cotton with Naptha or Turpentine followed by a wash as above.

Do not clean the screen with glass cleaners. Do not use rain protective products on the screen. The solvent action of the alcohol in these products will destroy the screen. Do not allow brake fluid, alcohol, or strong solvents to contact the screen or penetrate between the chrome brackets and the polycarbonate. Permanent damage will result!

STORAGE

Do not use low quality vinyl covers or old shower curtains to store your motorcycle or windshield. These products damage the plastic of windshields and the motorcycle body.