



**Quantum® Hardcoated Replacement Screen
for 2025 Honda® PCX160**
N50010 Sport-Touring Windscreen
N50011 Touring Windscreen
N50012 Tall Touring Windscreen

Thank you for purchasing a National Cycle product. Read these instructions carefully and thoroughly before beginning work. Dealers, if installing this windscreen for a customer, please give them this manual. It contains information needed to properly maintain and use this product.

PACKAGE CONTENTS

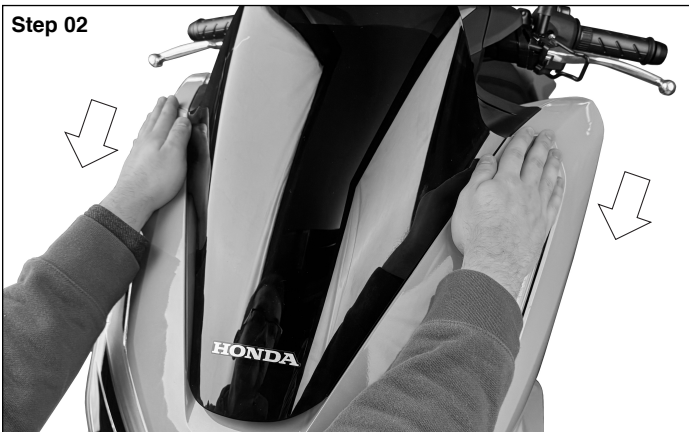
Item Description	Part No.	Qty.
Replacement Windscreen	N50010/11/12	1

TOOLS REQUIRED

5mm Allen Wrench or Driver
 10mm Box Wrench or Socket
 #1 Phillips Screwdriver

NOTES

All OEM hardware will be reused.



PREPARATION

Place vehicle securely on its centerstand.

INSTALLATION

Step 01

With a #1 Phillips Screwdriver, remove the two 4x16 Self-Tapping Screws under the nose of the OEM windscreen.

Step 02

Lift up the front of the windscreen cowl to separate the 20x25 Dual Lock™ Fasteners. Release the cowl by lifting the outer edge to free the mounting tabs. Carefully remove the cowl by pulling it downwards towards the front wheel.

Step 03

With a 5mm Allen Wrench, remove the two 5x14 Panhead Screws and Thrust Washers securing the windscreen at the bot-tom left/right from their captive Wellnuts.

With a 10mm Wrench, remove the two 6x12 Bolts securing the windscreen at the top left/right. Bolts have captive 9.5x18 Washers and Black Nylon Washers.

Retain all hardware for reassembly of new windscreen.



Quantum® is a registered trademark and exclusive product of National Cycle Inc.

Step 04



Step 05



Step 07



INSTALLATION; CONT'D

Step 04

Place the new Windscreen into position and reinstall the two 6x12 10mm Bolts and Black Nylon Washers securing the Windscreen at the top left/right.

Step 05

With a 5mm Allen Wrench, reinstall the two 5x14 Panhead Screws and Thrust Washers securing windscreen at the bottom left/right, making sure the threads capture the internal Wellnuts.

Step 06

Replace the Windscreen cowl by aligning the top tabs with the top slots and the hidden tabs with their hidden slots. Push upwards as indicated to engage the tabs in their slots.

Step 07

When the cowl is completely installed, make sure the 20x25 Dual Lock™ Fasteners under the front end are rejoined and then reinsert the two 4x16 Self-Tapping Phillips Screws under the nose of the new Windscreen.

You're all done.

Enjoy the ride with your new Windscreen!



CLEANING AND MAINTENANCE

To clean the screen, wash with a clean soft cloth and plenty of warm water and, if necessary, a non-abrasive soap such as dishwashing liquid. Flannel or soft chamois make good cleaning cloths. Paint, glue residue or grease removal: Moisten cotton wad with naphtha or turpentine followed by a wash as above.

National Cycle **Shield Wash™** (N1401-01) makes a good daily cleaner and comes with a handy travel-size bottle. Shield Wash is safe for all windshields and helmet visors

Do not clean polycarbonate in hot sun or high temperatures. Do not clean the screen with household glass cleaners. Do not allow brake fluid, alcohol, or strong solvents to contact the screen.

RAIN REPELLENT

Do not use rain protective products made for glass. We recommend National Cycle's **RainZip®** (N1410-01) to keep your windshield clear in rainy weather.



Register Your Windshield Online at www.nationalcycle.com

National Cycle 3-Year Limited Warranty

National Cycle hereby warrants to the original registered owner of a National Cycle polycarbonate windshield for a period of three years from the date of purchase against breakage. This limited warranty is expressly limited to the replacement of the polycarbonate windscreen. This limited warranty does not include scratches, coating failure, cosmetic wear and tear, replacement of hardware, or any consequential damages or expenses including labor cost of installation, removal and/or replacement, inconvenience, inbound freight expenses or damage to any other component of the motorcycle or any other accessories. Certain chemicals, generally known as acidic hydrocarbons, are known to cause polycarbonate damage and will not be covered under this limited warranty. Please refer to the cleaning instructions supplied with all National Cycle windshields.

Visit www.nationalcycle.com for further details, or call or write National Cycle

⚠ WARNING

Never ride your motorcycle with loose accessory mounting hardware. Check the hardware for tightness regularly.

Today's motorcycles are built with enough frame rigidity to withstand the moderate loads imposed on them by the foreseeable addition of an accessory(ies). If an accessory(ies) adversely affects your motorcycle's stability, immediately remove the accessory(ies). Do not ride a motorcycle that exhibits unsafe handling traits.

Have experienced service personnel correct any problem before riding with the accessory(ies) installed. For further questions concerning handling problems associated with an accessory(ies), contact your dealer, motorcycle manufacturer, or accessory manufacturer.

Sunlight reflected off the inside curvature of the windshield can, at certain times of day, cause extreme heat buildup on the motorcycles instruments and possibly even melt them. Exercise care in parking to avoid this. Park your motorcycle facing the sun or place an opaque object over this area.