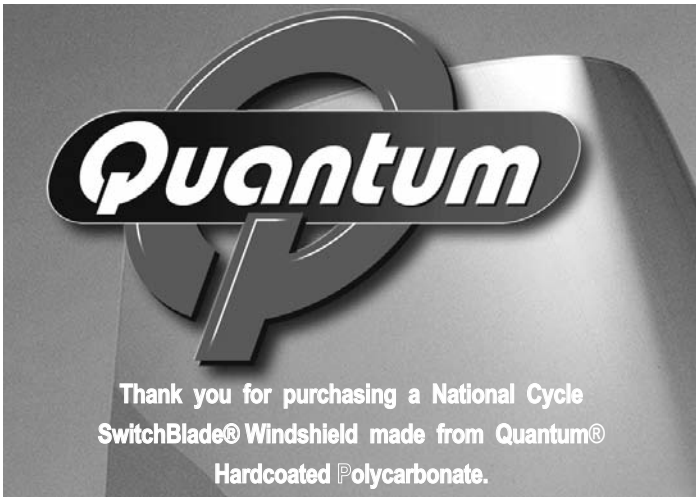




**Kit Q343 SwitchBlade Windshield Mount Kit**  
to mount SwitchBlade Windshields 2-UP™, Chopped™ or Shorty™  
to Harley-Davidson FLHR with our without stock lightbar.



**Dealers:** If installing the mount kit for a customer please give them this manual. It contains information needed to properly maintain and use this product.

This Switchblade® Mount Kit will allow you to mount four distinct SwitchBlade windshields to the motorcycle this Kit is installed on. Contact your dealer or National Cycle for information on these windshields: 2-Up®, Chopped™ and Shorty® and Deflector™.

<p><b>Attention</b></p> <p>Special notes and cautionary measures which can prevent damage to the accessory or motorcycle.</p>	<p><b>Note</b></p> <p>Tips for facilitation of operation, control and adjustment, as well as maintenance work.</p>
---	--

**PARTS LIST**

Kit-Q343 contains all hardware to mount the SwitchBlade Windsheild on an FLHR with *or* without a H-D light bar in place.

<u>INDEX</u>	<u>DESCRIPTION</u>	<u>QTY.</u>
1	34-340535-000 Spool, Upper, Inner	2
2	34-340536-000 Spool, Upper, Outer	2
3	34-340537-000 Spool, Cover	2
4	34-340525-000 Spool, Lower, FLHR	2
5	44-441906-000 Cushion	2
6	49-490301-000 Washer	4
7	51-514710-000 Screw, Flat 5/16"-18 x 1.25	2
8	51-516111-000 Screw, Button 5/16"-18 x 1.25	4

	<p>1, Hex Key Wrench, 3/16"</p> <p>1, Torque Wrench that accurately measures 180 inch pounds. (15 ft-lbs) (21 Nm)</p>
--	---

**Proper tightening of this assembly is critical. Use a Torque Wrench!** Follow this procedure! Correct assembly of this kit will provide years of reliable service.

Position the motorcycle securely on its stand or a work stand. Cover the front fender and fuel tank with a suitable cloth to avoid scratches from dropped tools and to rest light on during installation with a light bar.

**INSTALLATION**

**Preparation of Spools.**

1. Insert a Cushion into each Upper Outer Spool, item 2. **Figure 1**

Push Cushion in fully until flush with top of spool.

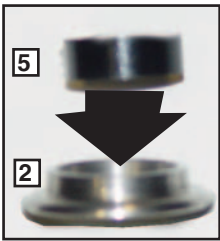


Figure 1

## INSTALLATION WITHOUT A LIGHT BAR

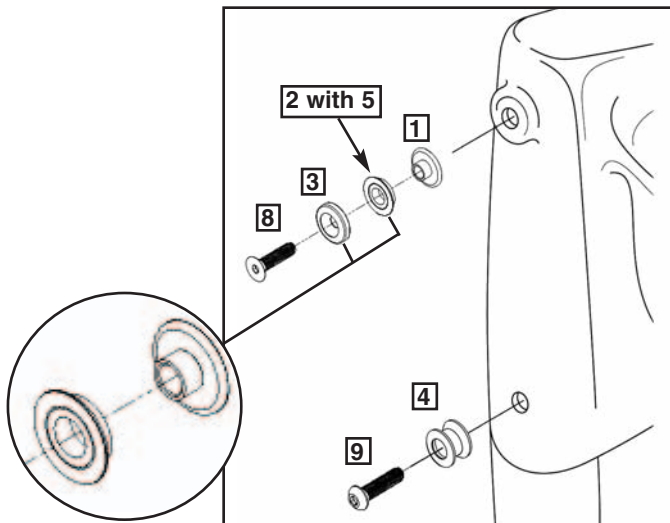


Figure 2

2. On one side of the motorcycle, remove the upper and lower stock triple clamp screws from the motorcycle. The required tool may vary depending on year of motorcycle. (3/16" Hex)

### Install Spools

3. Assemble upper and lower spools as indicated in **figure 2**. **Leave loose. (3/16" Hex)**

4. Repeat for other side.

### INSTALL WINDSHIELD



**Proper tightening of this assembly is critical. Use a Torque Wrench.**

1. Check that windshield key is in unlocked position. **Figure 4**

2. Straddle the front tire while holding your windshield. Place the lower two notches of the rail onto the two lower spools of the mounting hardware. Slight flexing of the shield may be necessary to accomplish this. If properly done, the notches will line up with the groove in each spool. Pivot the shield away from you and toward the bike. The upper notches of the brackets will line up with the upper spools on the mounting hardware.

3. After windshield is in place, tighten all upper and lower Screws to 180 Inch pounds (21 Nm) (15 ft-lbs). **Figure 6 (Torque Wrench, 3/16" Hex Wrench.)**

4. Cycle the shield through the mount and dismount 5 times. Retighten the to **180 INCH POUNDS (21 Nm) (15 ft-lbs).**

5. Refer to the booklet packaged with the SwitchBlade windshield for instruction on use and maintenance.



Figure 4

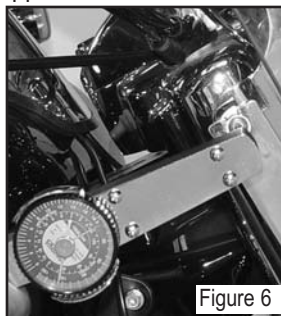


Figure 6

## INSTALLATION WITH A LIGHT BAR

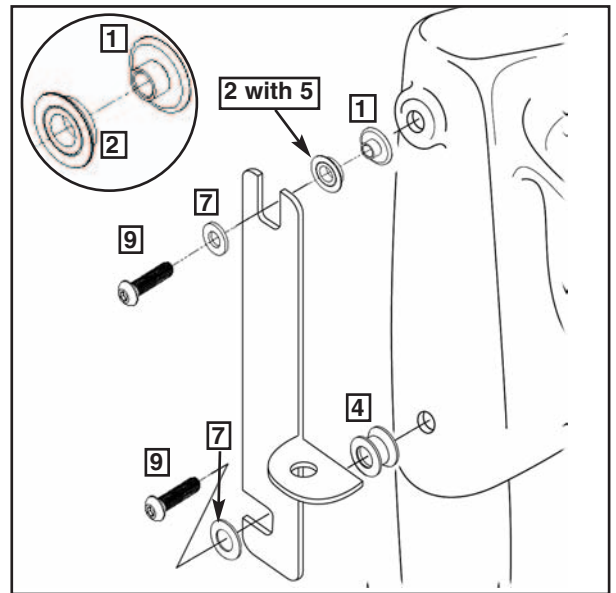


Figure 3

2. On one side of the motorcycle, remove the upper and lower stock triple clamp screws holding lightbar bracket to motorcycle. Carefully lower lightbar onto front fender. The required tool may vary depending on year of motorcycle. (3/16" Hex)

### Install Spools

3. Assemble upper and lower spools as indicated in **figure 3**. **Leave loose. (3/16" Hex)**

4. Repeat for other side.

5. Re-install the lightbar bracket. Flat washer, item 7, is placed to the **outside** of the lightbar bracket. **Figure 4.**

### INSTALL WINDSHIELD



**Proper tightening of this assembly is critical. Use a Torque Wrench.**

1. Check that windshield key is in unlocked position. **Figure 4**

2. Straddle the front tire while holding your windshield.

Place rail to **INSIDE** of the lightbar bracket, **figure 5**. Place the lower two notches of the rail onto the two lower spools of the mounting hardware. Slight flexing of the shield may be necessary to accomplish this. If properly done, the notches will line up with the groove in each spool. Pivot the shield away from you and toward the bike. The upper notches of the brackets will line up with the upper spools on the mounting hardware.

3. After windshield is in place, tighten all upper and lower screws to **180 Inch pounds (21 Nm) (15 ft-lbs).** **Figure 6 (Torque Wrench, 3/16" Hex Wrench.)**

4. Cycle the shield through the mount and dismount 5 times. Retighten to 180 INCH POUNDS (21 Nm) (15 ft-lbs).

5. Refer to the booklet packaged with the SwitchBlade windshield for instruction on use and maintenance.



Figure 5