

**Attention**


Special notes and cautionary measures which can prevent damage to the accessory or motorcycle.

**Note:**


Tips for facilitation of operation, control and adjustment, as well as maintenance work.

**PARTS LIST FOR N7024**

<u>Part</u>	<u>Description</u>	<u>Qty.</u>
70-710091-000	Rear of Rear Fender	1
<b>BAG #588</b>		
42-423050-000	Nut, Nylok	2
49-490531-000	Washer	2
55-568216-000	Screw, M5	2

**PREPARATION:**

Thank you for purchasing a National Cycle product.

1. Position motorcycle securely on its stand or a work stand.

2. Clean the fender thoroughly.


**INSTALLATION of REAR FENDER TIP**

1. Cover the area of the fender where the Fender Tip will mount with a thin layer of masking tape. Make certain the tape is smooth. **(Masking Tape)**

2. Carefully, position the Rear Fender Tip on the fender, make sure the Tip is centered on the fender. **Figure 1**

3. Mark the hole locations. **(Marking Pen) Figure 2**

4. Remove the Fender Tip.

 Due to close clearances between fender and tire, place block of wood between the fender and the tire to avoid tire damage. **Figure 3**

5. To avoid the drill slipping on the fender, use the Center Punch to make an impression at the center of your mark. Drill holes through the fender at the marks. **(Center Punch, Drill, Drill Bit, Wood Block) Figure 3**

6. Remove the masking tape.

7. Position the Fender Tip, and squeeze fender toward tip. Insert the Screws from the outside. Install the Washers and Nuts to the inside. Tighten securely. **(5/16" Wrench No. 2 Phillips Screwdriver) Figure 4**

**MAINTENANCE**

Clean and polish with a chrome cleaner/polish. Check tightness of the nuts regularly.



Finished Installation, Scout

**TOOLS REQUIRED:**

Masking Tape  
 Marking Pen  
 Small Wood Block 1/2" Thick (not shown)  
 Center Punch  
 Power Drill with 7/32" Drill Bit  
 5/16" Wrench  
 No. 2 Phillips Screwdriver

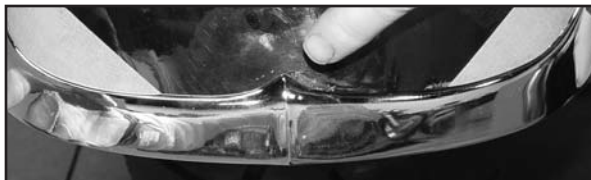


Figure 1 (The photos used are stock installation photos)



Figure 2

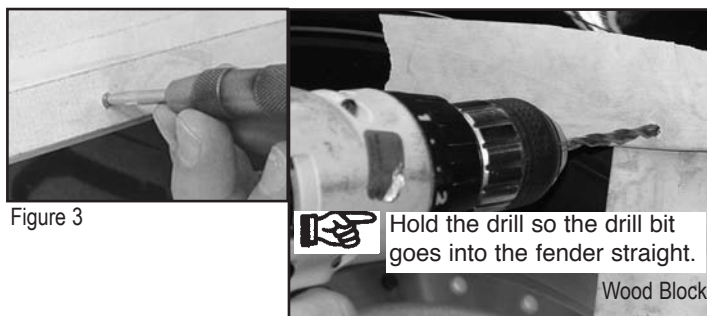


Figure 3



Hold the drill so the drill bit goes into the fender straight.

Wood Block

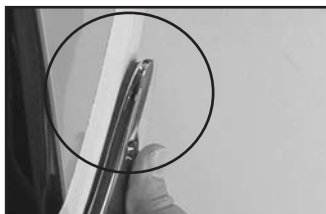


Figure 4

Insert Screw from outside of tip

Place Washer and Nut Inside Fender.