

TOOLS REQUIRED:

- Masking Tape
- Marking Pen
- Small Wood Block 1/2" Thick (not shown)
- Center Punch
- Power Drill with 7/32" Drill Bit
- 5/16" Wrench
- No. 2 Phillips Screwdriver


PARTS LIST

Part No.	Front of Front	Rear of Front
N7040	70-710067F-000	70-710067R-000
N7044	70-710077F-000 and	70-710077R-000

Bag No. 448 All Tips

42-423050-000	Nut, M5	4
49-490531-000	Washer	4
55-568216-000	Screw, M5-0.8 x 16	4

PREPARATION:

1. Position motorcycle securely on its stand or a work stand.
2. Clean the fender thoroughly.

INSTALLATION

1. Cover the area of the fender where the Fender Tip will mount with a thin layer of masking tape. Make certain the tape is smooth. **Figure 1.**

2. Carefully, position the front Fender Tip on the fender, make sure the Tip is centered on the fender. **Note and Figure 2.**

3. Mark the hole locations with the marking pen. **Figure 3.**

4. Remove the Fender Tip.

5. To avoid the drill slipping on the fender, use the Center Punch to make an impression at the center of your mark. Drill holes through the fender at the marks. **Due to close clearances between front fender and tire, place block of wood between the fender and the tire to avoid tire damage. Figure 4.**

6. Remove the masking tape.

7. Position the Fender Tip and insert the Screws from the outside. Install the Washers and Nuts. Tighten securely. **Figure 5.**

REAR OF FRONT FENDER

8. Repeat steps 1-7 to install the Fender Tip to the rear of the front fender. **Note:** To ensure a good fit, the Fender Tip is designed so that the fender will open up slightly and be pulled toward the Tip. **See figure 6.** First, center and position the Tip, and with two hands firmly squeeze the fender against the side of the Tip while a friend marks the drill location.

MAINTENANCE

Clean and polish with a chrome cleaner/polish. Check tightness of the nuts regularly.

Figure 1



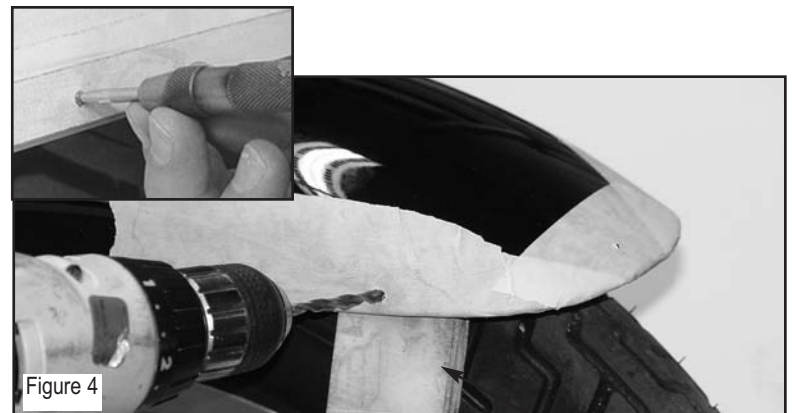
Note: To place tip on fender, start in position "A" with "tip" slightly upward, then bring tip "up and slide on to position "B".



Figure 2



Figure 3



Note: Hold the drill so the drill bit goes into the fender straight.

Wood Block

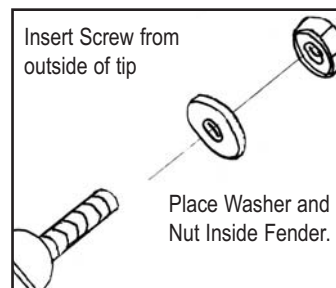


Figure 5



Figure 6

INSTALLATION INSTRUCTION
CAST FENDER TIP for Harley-Davidson® FatBoy®
PAGE 2- N7041, N7042, N7043 and N7045 Rear Fender

TOOLS REQUIRED:

- Masking Tape
- Marking Pen
- Center Punch
- Power Drill with 7/32" Drill Bit
- 5/16" Wrench
- No. 2 Phillips Screwdriver



PARTS LIST

Part No.	Rear of Rear
N7041	70-710068-000
N7042	70-710079-000
N7043	70-710080-000
N7045	70-710081-000

Bag No. 588, All Rear Fender Tips

42-423050-000	Nut, M5	2
55-568216-000	Screw, M5- 0.8 x 16	2
49-490531-000	Washer	2

PREPARATION:

1. Position motorcycle securely on its stand or a work stand.
2. Clean the fender thoroughly.

INSTALLATION

1. Cover the area of the fender where the Fender Tip goes with a thin layer of masking tape. Make certain the tape is smooth. **Figure 1.**

2. Carefully, position the Rear Fender Tip on the fender, make sure the Tip is centered on the fender. **Figure 1.**

Note: For a good fit to the fender, the tip is designed so the fender will open up slightly and pull toward the Tip. Have a friend mark the hole while you firmly hold both sides and squeeze the fender to the tip.

3. Have a friend mark the hole locations with the marking pen. **Figure 1.**

4. Remove the Fender Tip.

5. To avoid the drill slipping on the fender, use the Center Punch and make an impression at the center of your mark. Drill holes through the fender at the punch. **Figure 2.**

6. Remove the masking tape.

7. Position the Fender Tip and insert the Screws from the outside.

8. Install the Washers and Nuts on the Screws and tighten securely. **Figure 3.**

MAINTENANCE

Clean and polish with a chrome cleaner/polish. Check tightness of the nuts regularly.

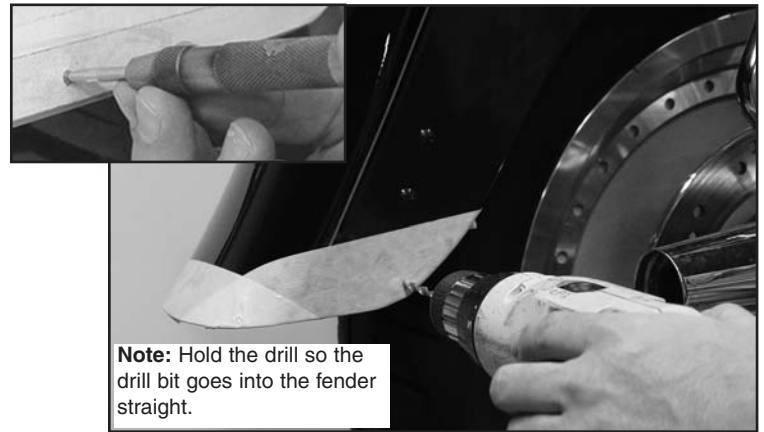


Note: To ensure a good fit, the Fender Tip is designed so that the fender will open up slightly and be pulled toward the Tip.

First, center and position the Tip and with two hands firmly squeeze the fender against the side of the Tip while a friend marks the drill location.



Figure 1. Tape Fender, Position Fender Tip, Mark Fender



Note: Hold the drill so the drill bit goes into the fender straight.

Figure 2.



Figure 3.

